

Housing First – A Primer

March 6, 2018

PTAC Conference

Ponte Verde Beach, FL



A bit about me!

- Kim Keaton – Associate Director at CSH, on our national Strategy and Impact Team
- I lead our work engaging with stakeholders in the justice system, which includes providing housing solutions for homeless frequent users of jails
- Email: kim.keaton@csh.org

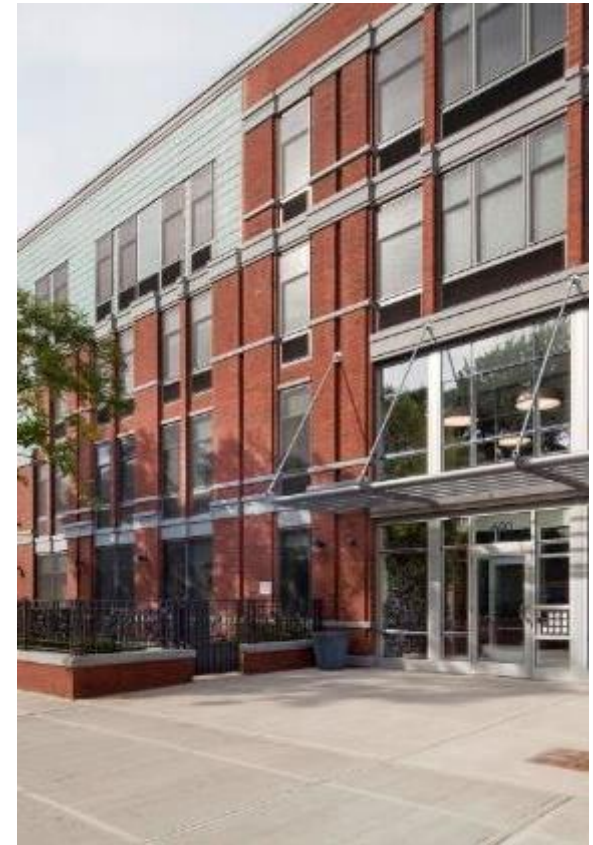
Advancing Housing Solutions that...



Improve the lives of
vulnerable people.



Maximize
public resources.



Build strong,
healthy communities.

1. What is your level of familiarity with Housing First: Low, medium, or high?



2. Have you ever worked with someone in your diversion/deflection program that you didn't think was "ready" for housing?

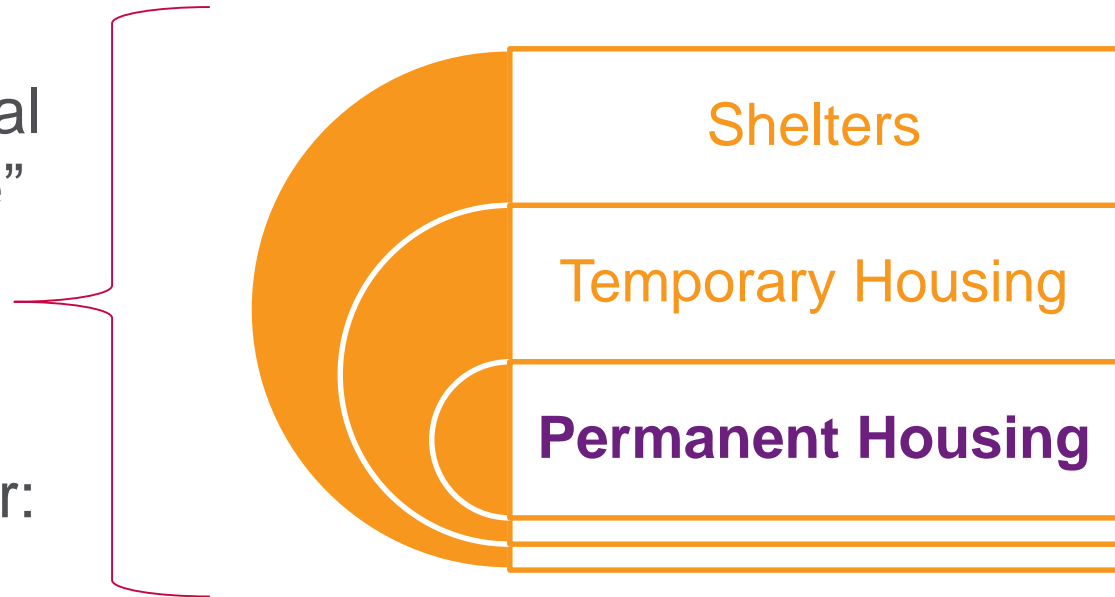
The Housing First Model

SAFETY, DIGNITY, STABILITY, AUTONOMY



First, a Word on the Homeless System

HUD funds regional “Continua of Care” that include homeless and housing service providers that offer:



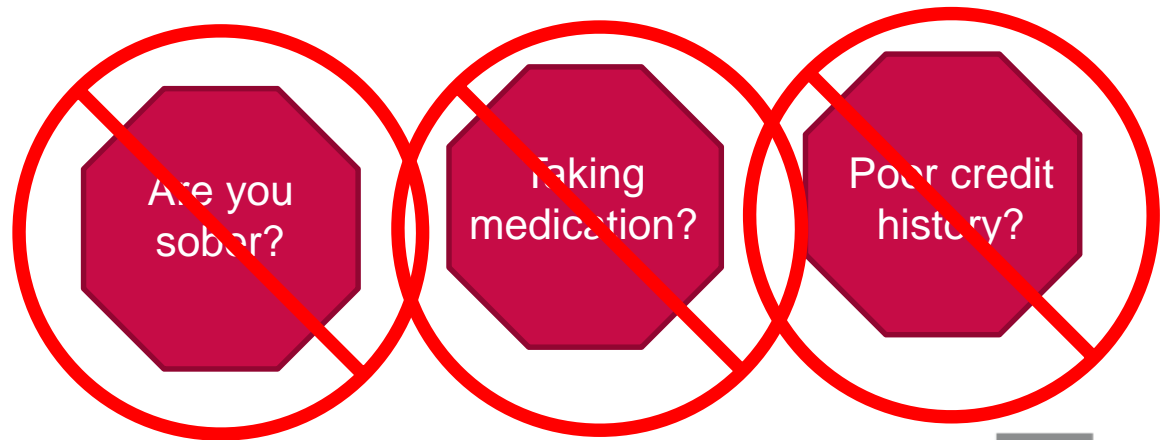
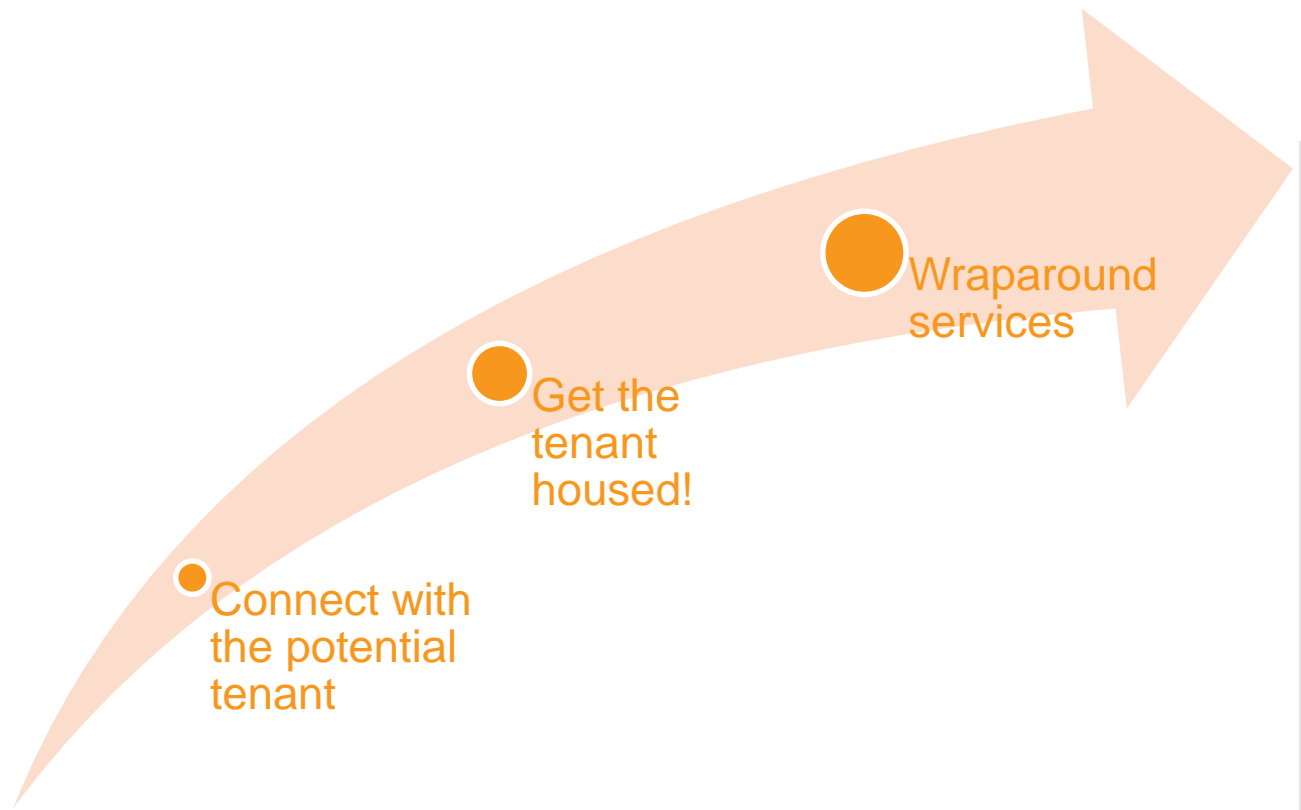
In the past 5 or so years, HUD has increasingly required that providers demonstrate they are using a Housing First approach. The reason is simple: homelessness is solved first and foremost by providing a home, which is a platform for recovery from mental and physical afflictions.

Housing
First Has
Two Central
Premises

**Quick
re-housing**

**Housing
focused,
voluntary
services**

Taking out the Housing Ready “stuff”



What's the evidence?

Housing First Works!

- Housing retention rates in HF model, 75% - 80%
- Fewer hospital visits by participants
- Reduced involvement in criminal justice system
- Greater satisfaction from participants



Key Principles: Housing First

1 Quick access to housing

2 Units targeted to most disabled and vulnerable

3 Provide leases and tenant protections

4 Centered on Consumer choice

5 Robust support services with assertive engagement

6 Embrace a harm-reduction approach

7 Tenancy is not dependent on participation in services

Quick
Access to
Housing

Housing
Focused,
Voluntary
Services

Units Targeted to the Most Vulnerable

Chronically homeless

At risk of homelessness



Cycling through systems

Exiting institutions

Screening
IN and not
OUT,
Recruiting
vs. waiting
for people to
sign up

- Making the process accessible at all points
 - At application, unit location, move-in
- Do you have:
 - Rules
 - Procedures
 - Policies
 - Applications
 - that really “Screen out”?



Voluntary Services

What are voluntary services?

Participation in services is not a condition of tenancy

Services are voluntary for tenants...not staff

Staff must work to build relationships with tenants

Emphasis should be on user-friendly services driven by tenant needs and individual goals

Services Make the Difference

Flexible,
voluntary

Counseling

Health and
mental health
services

Alcohol and
substance use
services

Independent
living skills

Money
management/
rep payee

Community-
building
activities

Vocational
counseling and
job placement

Housing stability
services

Questions?





Supportive Housing TRAINING CENTER

Your Source for Professional Development



Webinars



**Self-Paced
Online Classes**



Workshops



**Customized
Solutions**

csh.org/training

CSH SUMMIT 2018

June 5-7 | Los Angeles

OFFERING INTERACTIVE TRACKS THAT ARE
TIMELY, ENGAGING & RESULTS ORIENTED

Los Angeles Takes the Lead
Housing Not Jail

Developing & Sustaining Supportive Housing
Equity: It's Time for Action
Changing Trajectory for Families & Youth
Healthcare-Housing: The Next Chapter

New Funding for Supportive Housing
Maximizing Services

Research + Data = Better Programs & Outcomes
Spotlight on Rural America
Public Housing Authorities: Our Crucial Partners

[CSH.ORG/SUMMIT18](https://www.csh.org/summit18)

#CSHSUMMIT18   

THANK YOU!



stay connected



csh.org

